

A photograph of a dirt road stretching into the distance, flanked by rows of young, green trees. The sky is blue with scattered white clouds. The text 'Sustainability' is overlaid in white, with an orange underline that curves to the right.

Sustainability

begins with a Seed



PLANTATIONS Supporting Responsible Sourcing

In today's world, addressing climate change is crucial. Making small changes to our habits can limit its impact and help the planet recover. The current rate of global deforestation is a considerable contributing factor to climate change. In particular deforestation in the Amazon region has reached its highest level in 20 years, and harmful logging has spread to the heart of the rainforest itself

Fewer trees means that the rainforest's ability to store enormous amounts of carbon is reduced. It is therefore imperative that an alternative, sustainable source of hardwood is established to lessen the reliance on indigenous tropical hardwoods as well as to protect the rainforests and the climate itself for future generations.

As a responsible lumber company, **ELITE IMPORT & EXPORT LTD** of Brazil Supply of all of its Teak (Tectona Grandis) wood Round Logs and Sawn Timber products from our managed plantations in Northern Brazil & Pine Wood ,Eucalyptus M D F Board Ply Wood ,Teak Wood Deck our plantation teak is grown from seed and managed for long term sustainability. This ensures that our company can supply its products as an alternative to felling indigenous tropical hardwood forests in the Amazon, to help combat deforestation.

Through proper and comprehensive documentation, all material sold by **ELITE IMP & EXP LTDA** of Brazil is consistent with the Indian Timber Regulations (INDTR), European Union Timber Regulations (EUTR) 2013 as well as the Lacey Act in the United States of America.

The enforcement of the forthcoming EU Deforestation Regulations is scheduled to come into force on 31st December 2025. As a proactive player in the industry, ELITE company of Brazil is well-positioned to assist its clientele by furnishing detailed origin documentation and precise information pertaining to its plantations, sawmill operations, transportation logistics and loading facilities. By meticulously documenting the entire supply chain, granting customers peace of mind regarding the legality and compliance of their purchase.

ELITE IMPORT & EXPORT LTD An Brazilian company it Has it Suppliers from Mato Grosso, Rondônia, and other part of Brazil,
Contract together with its exploration licence, operating licence and state permits to supply Teak wood Sawn Timber, Teak Wood Round Logs all type Reflorested Wood



TOTAL Supply CHAIN & Processing TRANSPARENCY

we ensure that our customers have complete supply chain confidence of our material

This commitment is clearly outlined in the extensive EUDR compliance pack, providing transparency with every order. Through our wholly owned subsidiaries, we maintain sole responsibility for the manufacturing and shipping processes required to guarantee the quality and compliance of your exported products.

We welcome customers to visit our plantations and operations to evaluate the procedures first hand. The fundamental phases of each transaction encompass:

Plantation

Teak Wood harvests its material for production from plantations that it provides the all support,

Log Transportation

Our in-house logistics team load logs onto trucks for transport by road to our mill. We provide the log packing list of each truck, the related fiscal transportation note, licence information of the truck and identification of the driver.



Sawmilling

We operate our own sawmill, fully staffed by our employees. No production stage is outsourced.



DRYING

All material is dried at our production site in our Klin & AD



Planing & Moulding

Our production unit is equipped with high-quality machinery to enable our team to fabricate an array of profile moulding and bespoke manufacture all in-house.



Product GRADING

Our skilled staff review each piece individually undertaking a five-point inspection process to ensure all match the expectations of the customer.



Warehouse storage

Completed product is stored safely on site and its relevant barcode entered to our data management system. On order placement the relevant product is dispatched and married with its relevant origin documentation.



Transportation to Port

Our in-house logistics team load product for transport by road to port. We provide the packing list of each truck, the related fiscal transportation note, licence information of the truck and identification of the driver.



Exportation

Our experienced export team manage each container loading and production of the memorandum of export. We provide the DUE, export packing list, Bill of lading, certificate of origin, phytosanitary certificate and detailed invoice.





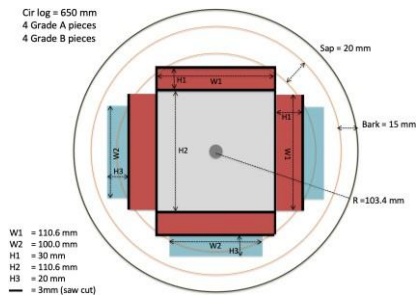
Our PLANTATIONS

teak plantations Located in the state of Mato Grosso, Brazil encompass a substantial cumulative expanse of 864.14 hectares, accommodating approximately 373,000 mature stems. These plantations have been grown from seed and consist exclusively of the *Tectona Grandis* species, aged between 16 and 29 years.

The meticulous upkeep includes periodic strategic thinning to promote uniform growth and fewer knots. The final harvesting process is undertaken by our engineers once the trees reach the age range of 20 to 29 years. At this juncture they are generally 10-16m tall and have a mid-point circumference between 80 to 140 cm, ensuring the optimal oil content in the wood. This final cut yields logs that are characterized by their minimal sap content, circa 20 % face coverage, and striking golden-toned heartwood.

Production of Decking

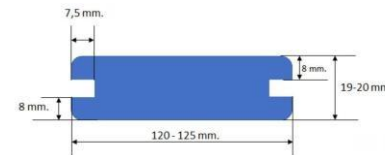
Our production unit is based Mato Grosso, Brazil is equipped with a full range with high-calibre machinery enabling to produce an array of precisely manufactured products. When lumber enters the facility its extraction register data are logged into our management system and each delivery is given a unique identifier so that we can track the materials progress through the varying processes of production and assign its origin.



The initial cuts on the blocking machine and bandsaw produce strips for flooring/deck production and also a square, recovery product. The excess bark and sapwood are removed and chipped to be utilised in the creation of steam to power the kilns. is an environmentally conscious enterprise and so we strive to reduce waste throughout the operation cycle. The resultant product volume and waste data is updated on our management system so we can track the delivery's progress and its ultimate yield.

The sawn lumber is then racked outside for 7 days to allow air drying and promote stabilisation. Thereafter the square products are palletted and dispatched for export, whilst the strip are placed in to the kilns to dry in uniform heat for circa 10 days, reducing their moisture content to 10—12%.

Our expert team processes the dried material on our Weinig moulders enabling us to accurately fabricate final products with S4S, E4E, T&G finishes or other such profiles to the customer's demand.



Due to meticulous grading by our skilled staff, not all material is approved to be palletted for sale once processed. In a continued effort to reduce waste, this rejected material is further processed on our fingering machine and glue press to produce further recovery products, such as panels and worktops. The resultant volume and waste data is again updated on our management system.



Products

Processing around 100m³ of teak logs a day, Mato Grosso operation has the capacity to produce approximately 730m³ (24, 40ft containers) of squared sizes/rough boards per month, 500m³ (20, 40ft containers) of decking/parquet and a further 160m³ (4, of 40ft containers) of recovery products.

Squared sizes



Lengths: 2,25 m & 2.60m
Cuts: 3"x3", 3"x4" & 3"x5" 4 x 6
Allowances: 3-5mm on h & w
32mm on l Container Size: 40 foot Loading volume:
30 m³ +/- 10% Volume

Rough boards



Lengths: 300mm – 2300mm
Cuts: 25mm x 40/50/60/70/80/90/100
Moisture content: Air dried: 16-18%,
Kiln dried: 10-12%
Container Size: 40 foot
Loading volume: 32 m³ +/- 10%
Volume Formula: $V = h \times w \times l$

DECKING



Lengths: 600mm – 4975mm
Cuts: 20mm x 70/80/90/100/120
Moisture content: Kiln dried: 10-12%
Container Size: 20 or 40 foot
Loading volume: 18m³ or 35 m³ +/- 10%
Volume Formula: $V = h \times w \times l$

PARQUET

Lengths: 2,25m & 2,60m
Cuts: 300mm-900mm
Moisture content: Kiln dried: 10-12%
Container Size:
Loading volume:
Volume Formula:

DECK



Lengths: 300mm – 4000mm
Cuts: 20mm x 70/80/90/100/120
Moisture content: Kiln dried: 10-12%
Container Size: 20 or 40 foot
Loading volume: 20m³ or 40 m³ +/- 10%
Volume Formula: $V = h \times w \times l$

&















Decking Grading

Our decking lengths and tiles are manufactured in a variety of widths and lengths, according to customer requirement and available in two grades: A and B. The grading specifications of each can be outlined as:

GRADE A

TOP FACE: - 100% heartwood; sapwood is not allowed, only sound knots are accepted on the clear face but cannot exceed more than 4cm in size; allowed no more than 3 sound knots per linear meter in the top view of the longer pieces, pin holes and wormholes are not allowed on the top face.

GRADE B

TOP FACE: - Sapwood cannot exceed 20% of the whole top face; only sound knots are accepted on the top face but cannot exceed more than 4cm in size; allowed no more than 3 sound knots per linear meter in the top view of the longer pieces, pin holes and wormholes are not allowed on the top face.

BOTH A & B GRADES

BOTTOM FACE: - Sapwood cannot exceed 30% of the whole bottom face; very small pin holes are allowed in the bottom face only (if presented the pin holes/ wormholes are not covered with wax or saw dust); only sound knots and pin knots are allowed on the bottom face.

NOT ALLOWED ON EITHER FACE

- pith, cracks, splits, surface checks and end checks.
- open knots, large sound knots (bigger than 4cm), dead knots, check knot, edge knot, soft and loose knots and large bee holes.
- rough grain, excessively curly or wavy grains, large pitch or bark pockets, large chalk pockets, in bark, soft heart centre, cross or sloping grain, milling defects and defects that can affect the structure of the wood.
- dead edges (incomplete edges of the pieces).

Parquet blanks

Our parquet blanks are available in three distinct grades: Prime, Select, and Character. Each of these grades has been skillfully processed and carefully kiln dried to significantly reduce the moisture content of the material, bringing it down to an approximate level of 10%. This process ensures that the blanks are well-suited for a variety of flooring applications, providing both durability and aesthetic appeal



Width (mm)	Height (mm)	Length (mm)	Finish	Grade	
60	10	300 / 400	KD / S4S	P	
60	10	300 / 400	KD / S4S	S	
60	10	300 / 400	KD / S4S	C	
75	14	400 / 500	KD / S4S	P	
75	14	400 / 500	KD / S4S	S	
75	14	400 / 500	KD / S4S	C	
90	18	600 / 700 / 800 / 900	KD / S4S	P	
90	18	600 / 700 / 800 / 900	KD / S4S	S	
90	18	600 / 700 / 800 / 900	KD / S4S	C	

Pine Wood For Pallets & Decking all sizes Available,

Our Pine Deck are manufactured in a variety of widths, depths and lengths, according to customer requirement and available in three grades: Prime, Select and Character. The grading specifications of each can be outlined as:



PRIME GRADE

TOP FACE: - 100% Heart Wood sapwood is not allowed, only a few, if any, sound knots are accepted on the top face but these will be of minimal size. Pin holes and wormholes are not allowed on the top face.

Select Grade

TOP FACE: - Typically this will have a mix of almost prime boards with other planks which have more or larger sound knots, but cannot exceed more than 4cm in size. Heartwood and colour variation in the timber should be expected and there may be some sapwood and filler on the top face.

PRIME & SELECT GRADES

BOTTOM FACE: - Sapwood cannot exceed 30% of the whole bottom face; no pin holes are allowed in the bottom face only (if presented the pin holes/ wormholes are not covered with wax or saw dust); only sound knots and pin knots are allowed on the bottom face.

Character Grade

TOP & BOTTOM FACE: - Typically, both faces will include both Heart and sapwood and allows a wider range of colour variation. Knots can be larger than 4cm and you should expect checks (cracks across the growth ring) and possibly some end shake (cracks between the rings), filler will be used

NOT ALLOWED ON EITHER FACE

- pith and splits.
- open knots, dead knots, check knot, edge knot, soft and loose knots and large bee holes.
- rough grain, excessively curly or wavy grains, large pitch or bark pockets, large chalk pockets, in bark, soft heart centre, cross or sloping grain, milling defects and defects that can affect the structure of the wood.
- dead edges (incomplete edges of the pieces).

ELITE IMPORT & EXPORT LTDA
BRAZIL

Contact Us

For sales enquiries, please contact

E -mail :

aria.sma@eliteimpex.com.br

Tel : 005511984213975

